

## OVERVIEW

High-quality traditional wall pack. The optional factory-installed Sigtex Emergency Lighting Control option ensures full emergency code compliance at the lowest possible cost.

PROJECT:

TYPE:

CATALOG #:

## SPECIAL FEATURES

- **Emergency lighting from 1,500 Lm to 5,600 Lm with adjustable Emergency Lighting Control (ELC), powered from a Sigtex low-voltage central battery system. See Page 3 for details.**
- Available with factory-installed UL Listed Emergency Lighting Control (ELC), for connection to a Sigtex central battery, DC emergency power system.
- Available in 4000k (neutral white) and 5000k (cool white) color temperatures\*
- Long-life LEDs provide at least 70% of initial lumen output ( $L_{70}$ ) for > 158,000 hours of operation (16L), and at least 90% of initial lumen output (L90) for > 49,000 hours of operation\* (16L)
- LED chromaticity based on < 5-step ANSI quadrangles
- LED color maintenance < 0.002 chromaticity shift ( $\Delta u'v'$ ) over the initial 6,000 of operation
- Provides a range of 6,401 to 15,738 nominal lumens and 141 to 151 nominal lumens per watt (lm/W)
- 0-10vdc dimming drivers, which provide 10% continuous dimming are standard
- Universal 120-277 AC voltage (50-60Hz) is standard.
- Power factor > 0.90
- Total harmonic distortion < 20%
- Color rendering index (Ra) > 70. Red color rendering > -28
- Cast aluminum housing with dark bronze, powder coat finish
- Glass lens
- Three 1/2" NPT threaded openings
- Easy installation in new construction or retrofit applications

\* Contact factory for other color temperatures and lumen packages.

\*\* L70 hours are IES TM-21-11 calculated hours.



## WARRANTY & LISTINGS

- cULus listed for wet locations in ambient temperatures from -20°C to 40°C (-4°F to 104°F)
- IP65 rated for ingress protection
- Complies with FCC Part 15, class A
- Complies with IEEE C.62.41-2002, surge immunity protection (2kV)
- Complies with RoHS (Restriction on Hazardous Substances) requirements
- View Sigtex [Warranty](#) for further details



## FIXTURE ORDERING INFORMATION EXAMPLE: WPT-43-6L-4K-ELC10P2

WPT

SERIES	POWER WATTS	LUMENS <sup>2</sup>	VOLTAGE	COLOR TEMPERATURE	OPTIONS <sup>1</sup>
WPT	42	6L 6,000Lm	MV 120-277VAC	4K 4000K	ELCPXX Emergency Lighting Control PB Button photocell PP Pencil photocell
	56	8L 8,000Lm		5K 5000K	
	68	10L 10,000Lm			
	83	12L 12,000Lm			
	110	16L 16,000Lm			

<sup>1</sup> See Option Detail Tables

<sup>2</sup> Average values. Contact factory for specific value.

## ELECTRICAL DATA

MODEL	COLOR TEMP.	CRI <sup>1</sup>	LUMINAIRE LUMENS	LUMINAIRE WATTS	LUMENS/ WATT	INPUT VOLTAGE <sup>2</sup>	INPUT CURRENT (A)			POWER FACTOR	THD <sup>3</sup>	L <sub>70</sub> HOURS <sup>4</sup>
							120V	240V	277V			
WPT-6L-4K	4000K	>70	6,401	42	151	120-277	0.35	0.18	0.15	>0.90	<20%	181,000
WPT-6L-5K	5000K	>70	6,437	42	151	120-277	0.35	0.18	0.15	>0.90	<20%	181,000
WPT-8L-4K	4000K	>70	8,264	56	147	120-277	0.47	0.23	0.20	>0.90	<20%	173,000
WPT-8L-5K	5000K	>70	8,346	57	147	120-277	0.47	0.24	0.20	>0.90	<20%	173,000
WPT-10L-4K	4000K	>70	9,944	68	145	120-277	0.57	0.29	0.25	>0.90	<20%	172,000
WPT-10L-5K	5000K	>70	10,048	69	146	120-277	0.57	0.29	0.25	>0.90	<20%	172,000
WPT-12L-4K	4000K	>70	12,145	83	146	120-277	0.69	0.35	0.30	>0.90	<20%	167,000
WPT-12L-5K	5000K	>70	12,241	84	146	120-277	0.70	0.35	0.30	>0.90	<20%	167,000
WPT-16L-4K	4000K	>70	15,523	110	141	120-277	0.92	0.46	0.40	>0.90	<20%	158,000
WPT-16L-5K	5000K	>70	15,738	111	141	120-277	0.93	0.46	0.40	>0.90	<20%	158,000

<sup>1</sup> Color rendering index.

<sup>2</sup> All 50-60Hz.

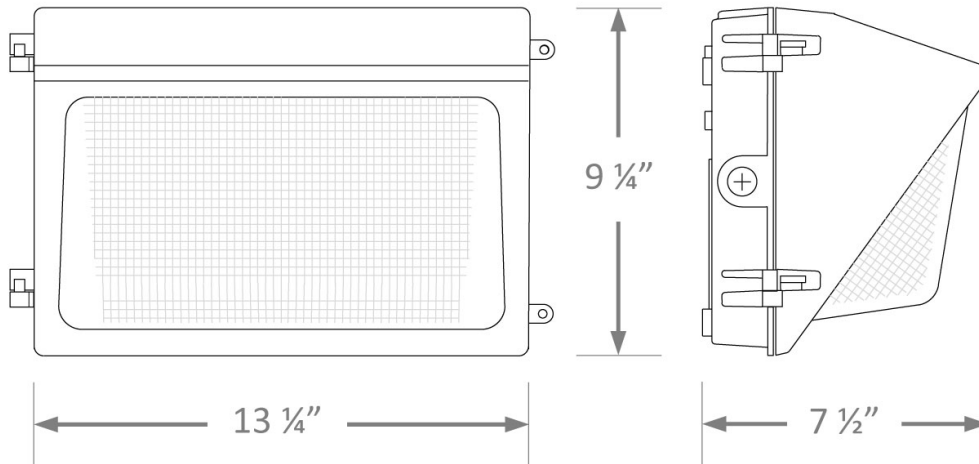
<sup>3</sup> Total harmonic distortion.

<sup>4</sup> L<sub>70</sub> refers to the number of hours at which lumen output declines to 70% of the initial level. L<sub>70</sub> hours are IES TM-21-11 calculated hours.

## PHOTOMETRIC DATA

- [IES Files and Zonal Lumen Summaries and Polar Diagrams](#)

## DIMENSIONS



## OPTIONS

### EMERGENCY LIGHTING CONTROLS (ELC) *For use with Central Battery Systems (purchased separately)*

MODEL	OPTION CODE			
	ELC10P2	ELC14P2	ELC20P4	ELC40P4
	EM Lumens <sup>1</sup>	EM Lumens <sup>2</sup>	EM Lumens <sup>1</sup>	EM Lumens <sup>2</sup>
WPT42	1500	2100	3000	-
WPT56	1500	2100	3000	-
WPT68	-	-	2800	5600
WPT83	-	-	2800	5600
WPT110	-	-	2800	5600

<sup>1</sup> Minimum <sup>2</sup> Maximum

Note: Lumen output is factory adjustable. Contact factory for specific values.

Learn more about ELC's on our website, [www.signtexinc.com](http://www.signtexinc.com).

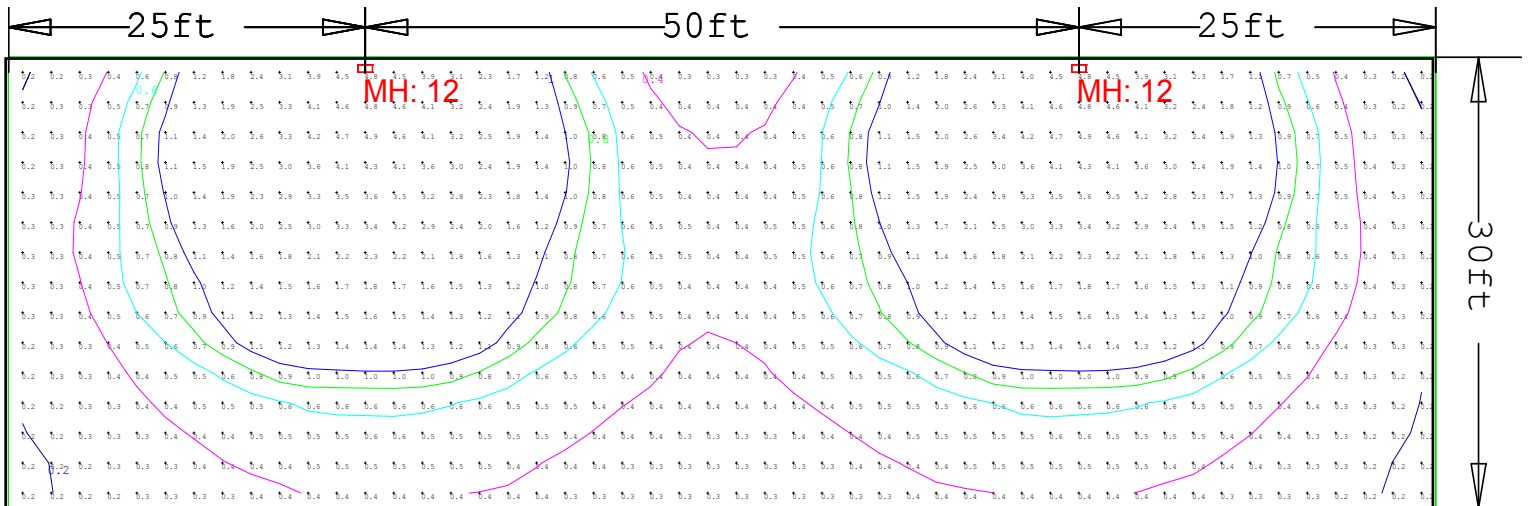
## Emergency Lighting with ELC

The following Point-to-Point sample shows typical performance in the medium power range for both fixture and ELC, based on IES files and using a light loss factor (LLF) calculated as follows:

**LIGHT LOSS FACTOR = ELC Emergency Power (Watts)\* / Fixture Normal Power (Watts)**

**LLF =  $\frac{\text{ELC Emergency Power* (Watts)}}{\text{Fixture Normal Power (Watts)}}$  \*Power value and ELC Type are given in the OPTION CODE above.**  
**Example: ELC10P1 = 10 Watts Emergency Power for 90 mins: Package Type P1**

The calculation is based on illumination values given in NFPA 101 and NEC 70, which stipulate an initial minimum average of 1 Fc at floor level, a minimum of 0.1 Fc at any point, and a uniformity ratio no higher than 40:1. NOTE, values are allowed to decrease 40% after 90 minutes, but ELC is a constant power device so emergency illumination does NOT decrease.



MODEL	ELC OPTION #	ELC POWER	EMERGENCY LUMENS	LLF	MOUNT HEIGHT	AVG. LUMENS ON PATHWAY	MAX/MIN UNIFORMITY
WPT68	ELC20P4	20 Watts	2893	0.29	12 FT.	1.09 Fc	24.50