

# Emergency Lighting Control

## For Use With Series CBS Central Battery System for Emergency Lighting

Series ELC  
Type P6

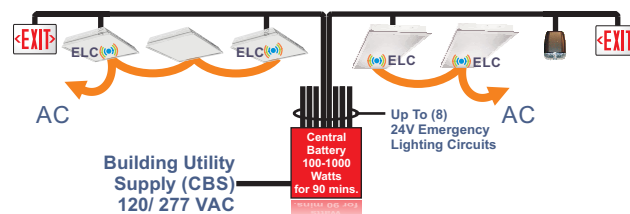
ELCP6.01.24.03

### GENERAL DESCRIPTION

ELC converts any LED luminaire operating from normal AC or 24VDC power, to emergency lighting operation powered from a Sigtex central battery system. Constant power output is factory adjustable to optimize emergency illumination level and fixtures may be on, off, switched or dimmed in normal mode without affecting emergency operation. General lighting fixtures with ELC may be combined with MOONLITE LED™ emergency luminaires and exits in the central battery system, as required.

Typical applications for Type P6 may include Down Lights, 2 x 2 or 2 x 4 LED flat panel or other lay-in designs, with normal power ranging from 10W to 70 watts or more.

All Sigtex central battery systems Series CBL and CBM include fully automatic self-test, self-diagnostics. Series CBM includes the MARS™ Monitoring and Reporting System which provides cloud-based internet communication and fault reports delivered automatically via email for all components of the emergency system.



Low Voltage Emergency Circuits

### CONSTRUCTION & OPERATION

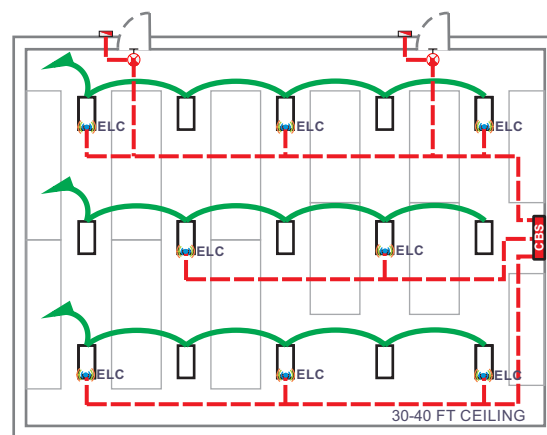
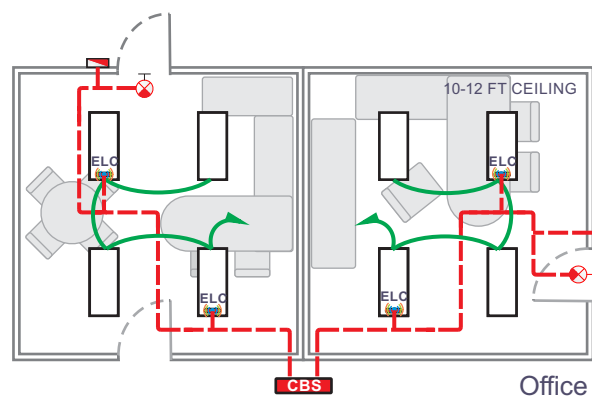
- Plenum rated Glass fiber enclosure.
- External mount, factory or field installable on junction box.
- Normal lighting operation is not affected by ELC operation.
- Compatible with all types of dimming and lighting controls.

### ELECTRICAL

- Input 24 VDC.
- Constant emergency power output is factory adjustable from 5W to 20W .
- Output voltage auto sensing range up to 54V.
- Adjustable emergency lumen output allows optimum settings for any fixture to equal or exceed requirements of NEC and NFPA 101 codes for varying mounting heights and other conditions.
- Available for LED fixtures operating from 10W to 70W or higher in normal mode.
- Optional DC models available for compatible LED fixtures operating from 24VDC normal power.

### CODES

- UL Listed in compliance with UL Standard 924 and CAN/CSA C22.2 No. 141-15 for field or factory installation in Fire and Electrical Enclosure. All Sigtex Central Battery Systems and MOONLITE LED emergency fixtures are Listed to UL Standard 924.



Warehouse

### FIXTURE SCHEDULE

MODEL	CATALOG NO
APPROVAL	JOB INFORMATION

— EMERGENCY LIGHTING CIRCUIT: LOW VOLTAGE 24 VDC  
 NORMAL LIGHTING BRANCH CIRCUIT 120/ 277 VAC



# Emergency Lighting Control For Use With Series CBS Central Battery System for Emergency Lighting

**Series ELC  
Type P6**

ELCP6.01.24.03

## SUGGESTED SPECIFICATIONS:

Supply and install Sigtex Emergency Lighting Control Series ELC which shall be capable of operating a LED general lighting fixture in emergency mode for a minimum of 90 minutes following failure of the normal power supply to the fixture, when connected to a Sigtex Central Battery System, Series CBM or CBL, with luminance level to equal or exceed the minimums required by the current NEC codes.

See Sigtex SPECIFICATION GUIDE to develop exact specifications for your specific application

### EMERGENCY OUTPUT

#### STANDARD POWER

Output Voltage Range.....30- 54 VDC  
Current Range (Settable).....100- 400 mA  
Max Power.....20 Watts

#### LOW VOLTAGE (OPTION: LV)

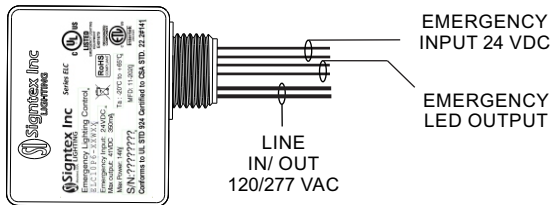
Output Voltage Range.....5 - 41 VDC  
Current Range (Settable).....50-350 mA  
Max Power.....14 Watts

**Operating Temperature:** -20° to +65° C

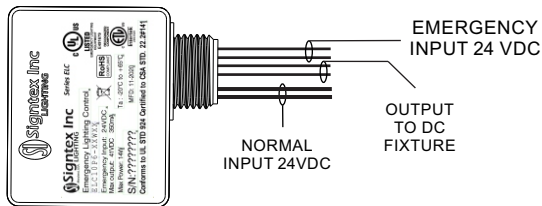
**Max Ambient Temperature (Ta)** 65° C

**Max Case Temperature (Tc)** 80° C

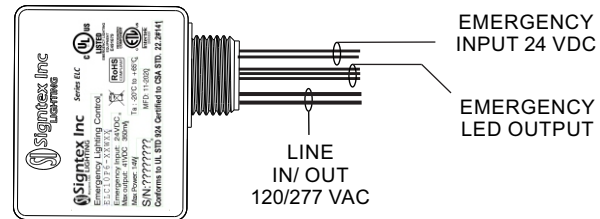
#### OPTION: LV



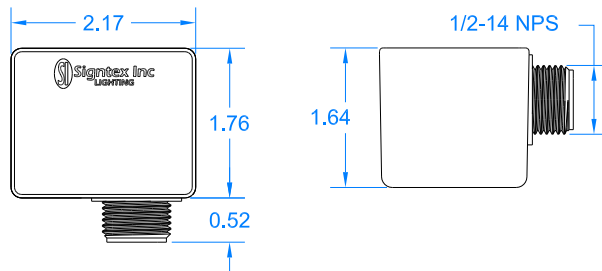
#### OPTION: DC



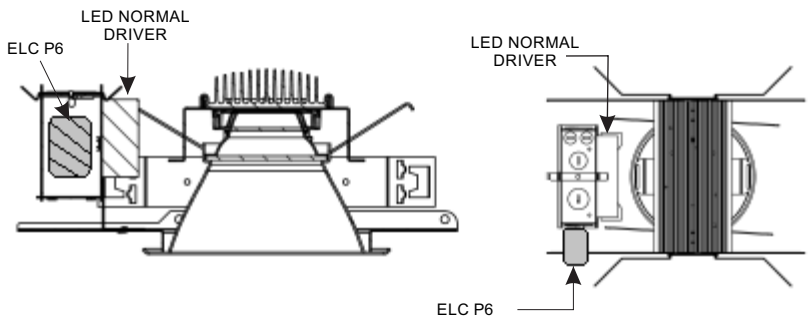
### STANDARD MOUNT : VOLUME 7.0 CU INCH



#### DIMENSIONS:



#### TYPICAL J-BOX MOUNT



### ORDERING INFORMATION: Example: ELC14P6-40W20-LV

ELC	14	P6	-40W	20	-LV
MODEL SERIES	EMERGENCY POWER WATTS	PACKAGE TYPE	FIXTURE NORMAL POWER WATTS	NORMAL DRIVER MAX OUTPUT VOLTS	OPTIONS
ELC	X Watts <sup>1</sup>	P6	XW= X Watts	X Volts DC	LV = Low Voltage DC= In/ Out 24 VDC Normal Power <sup>2</sup>

<sup>1</sup> Based on lumen output required

<sup>2</sup> If LED arrays include current regulation circuits, contact factory to confirm ELC is compatible.

**Sigtex Inc**  
LIGHTING  
220 VFW Avenue, Grasonville, MD 21638  
TEL: (410) 827-8300 Fax: (410) 827-8866  
sales@sigtexinc.com www.sigtexinc.com

DISTRIBUTOR: