

Emergency Lighting Control

For Use With Series CBS Central Battery System for Emergency Lighting

Series ELC
Type P4

ELCP4.10.17.11

GENERAL DESCRIPTION

ELC converts an LED luminaire to emergency lighting operation, powered from a Sigtex central battery system. Constant power output is factory adjustable to optimize emergency illumination level and fixtures may be on, off, switched or dimmed in normal mode without affecting emergency operation. General lighting fixtures with ELC may be combined with MOONLITE LED™ emergency luminaires and exits in the central battery system, as required.

Typical applications for Type P4 may include high-bay luminaires with normal power range from 50W to 400W, and AC LED driver output up to 210V.

All Sigtex central battery systems Series CBL and CBM include fully automatic self-test, self-diagnostics. Series CBM includes the MARS™ Monitoring and Reporting System which provides cloud-based internet communication and fault reports delivered automatically via email for all components of the emergency system.

CONSTRUCTION & OPERATION

- Factory or field installable in the Fire and Electrical Enclosure of listed fixtures.
- Normal lighting operation is not affected by ELC operation.
- Compatible with all types of dimming and lighting controls.

ELECTRICAL

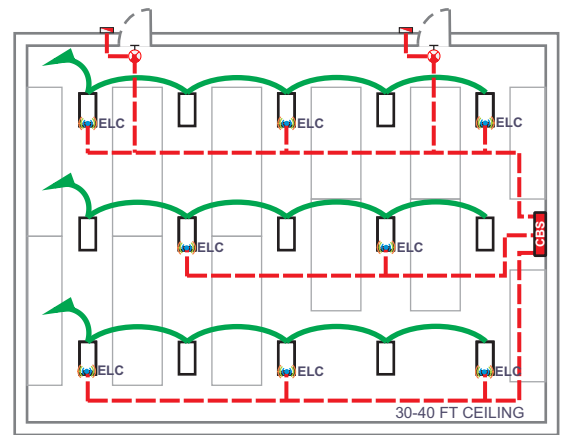
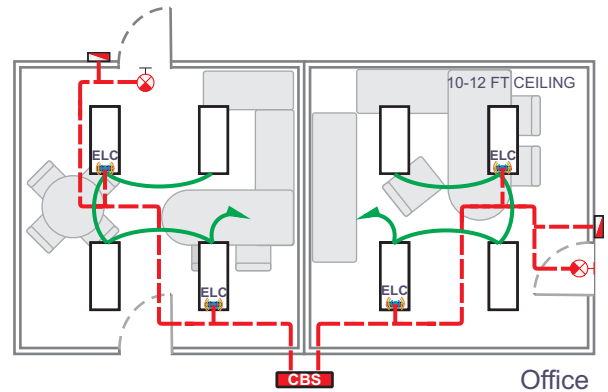
- Input 24 VDC.
- Constant emergency power output is factory adjustable from 15W to 60W.
- Up to 4 Channel output for operation in luminaires with up to 4 drivers.
- Input voltage option to 480 VAC.
- Output voltage auto sensing range up to 210V.
- Adjustable emergency lumen output allows optimum settings for any fixture to equal or exceed requirements of NEC and NFPA 101 codes for varying mounting heights and other conditions.
- Available for LED fixtures operating from 50W to 400W or higher in normal mode.

CODES

- UL Listed in compliance with UL Standard 924 and CAN/CSA C22.2 No. 141-15 for field or factory installation in Fire and Electrical Enclosure. All Sigtex Central Battery Systems and MOONLITE LED emergency fixtures are Listed to UL Standard 924.



Low Voltage Emergency Circuits



Warehouse



FIXTURE SCHEDULE

MODEL	CATALOG NO
APPROVAL	JOB INFORMATION

DESIGNED & MANUFACTURED
IN THE USA

UL
LISTED

Sigtex Inc
LIGHTING
SPECIFIED EMERGENCY LIGHTING

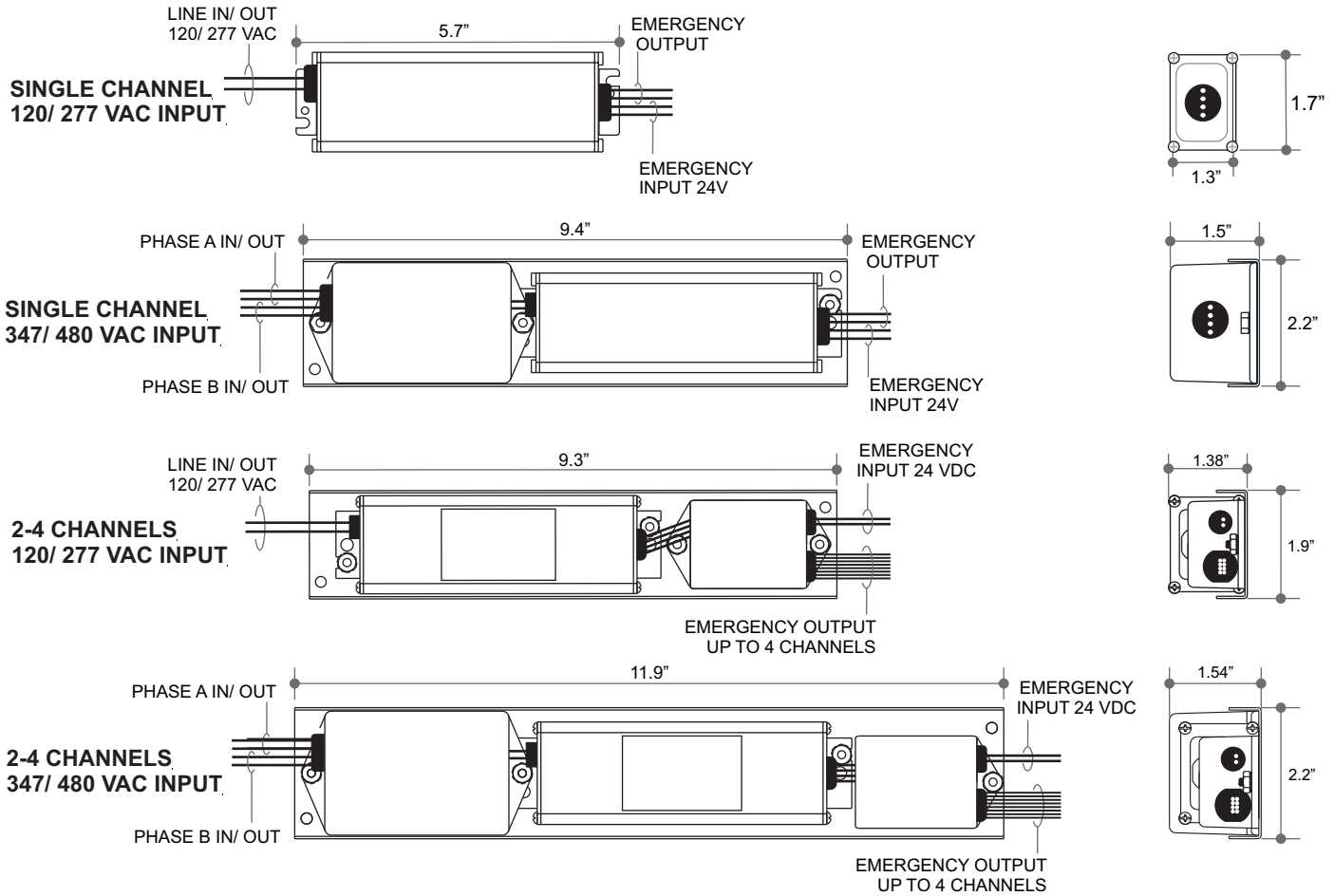
Emergency Lighting Control For Use With Series CBS Central Battery System for Emergency Lighting

**Series ELC
Type P4**

ELCP4.10.17.11

SUGGESTED SPECIFICATIONS:

Supply and install Sigtex Emergency Lighting Control Series ELC which shall be capable of operating a LED general lighting fixture in emergency mode for a minimum of 90 minutes following failure of the normal power supply to the fixture, when connected to a Sigtex Central Battery System, Series CBM or CBL, with luminance level to equal or exceed the minimums required by the current NEC codes. See Sigtex SPECIFICATION GUIDE to develop exact specifications for your specific application



EMERGENCY OUTPUT: MAX POWER 60W

Standard Voltage.....24-57 VDC; 100-1050 mA
Option Voltage V1.....60-180 VDC; 100-330 mA
Option Voltage V2.....60-210 VDC; 100-290 mA

Operating Temperature: -35° to +65° C
Max Ambient Temperature (Ta) 65° C
Max Case Temperature (Tc) 85° C

ORDERING INFORMATION: Example: ELC12P4-48W36-CH2

ELC	12	P4	-48W	36	-CH2
MODEL SERIES	EMERGENCY POWER WATTS	PACKAGE TYPE	FIXTURE NORMAL POWER WATTS	NORMAL DRIVER MAX OUTPUT VOLTS	OPTIONS
ELC	X Watts ¹	P4	XW=X Watts	X Volts DC	CHX = X Channels ² V1 = 60 - 180 VDC: 100 - 330 mA V2 = 60 - 210 VDC: 100 - 290 mA HV= 347/ 480 VAC Input

¹ Based on lumen output required

² X= Number of normal drivers installed

Sigtex Inc
LIGHTING
220 VFW Avenue, Grasonville, MD 21638
TEL: (410) 827-8300 Fax: (410) 827-8866
sales@sigtexinc.com www.sigtexinc.com

DISTRIBUTOR: