

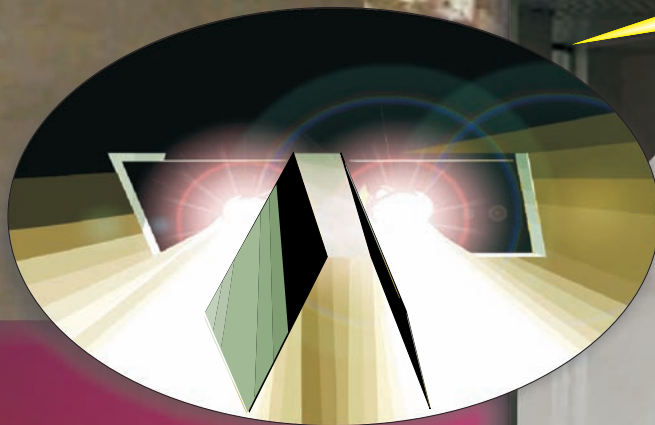
Coverlite *Recessed Emergency Light*

Series CVR

Undercover in standby mode...

COVERLITE is hidden during normal lighting conditions, unlike conventional exposed lamp heads & battery boxes

The hinged mirror doors close flush with the mounting surface. The exterior can be finished to match any color



High intensity quartz halogen lighting and widely adjustable lamp beams ensure the path of egress is illuminated as required by national building codes

*...opens instantly in
Emergency Mode.*

U.S. Patent 5, 851, 061



Signtex Inc
LIGHTING

SPECIFIED EMERGENCY LIGHTING

Coverlite

Recessed Emergency Light Series CVR

THE UNDERCOVER OPERATOR

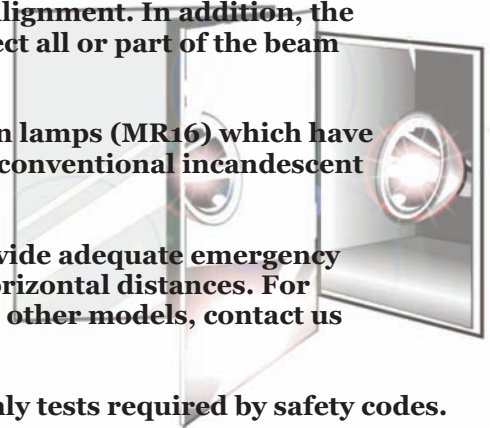
•COVERLITE blends effortlessly into any environment until building power fails, when mirror doors snap open instantly to produce powerful emergency lighting along the path of egress.

•Lamp heads are individually adjustable for horizontal and vertical alignment. In addition, the doors, which have reflective internal surfaces, are adjustable to deflect all or part of the beam at acute angles for special locations.

•Emergency lighting is provided by very high intensity quartz halogen lamps (MR16) which have a much higher output than fluorescent (inverter ballast) lighting, or conventional incandescent lamps. See spacing layout below, assuming 12 ft ceiling height.

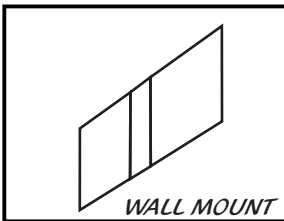
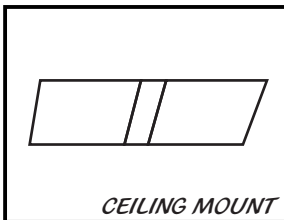
•With lamp power ranging up to 150 watts, COVERLITE can also provide adequate emergency lighting from extreme ceiling heights over 50 ft., or over extended horizontal distances. For detailed photometric and economic comparisons with fluorescent or other models, contact us with your project details.

•Our standard diagnostics package automatically performs all monthly tests required by safety codes.

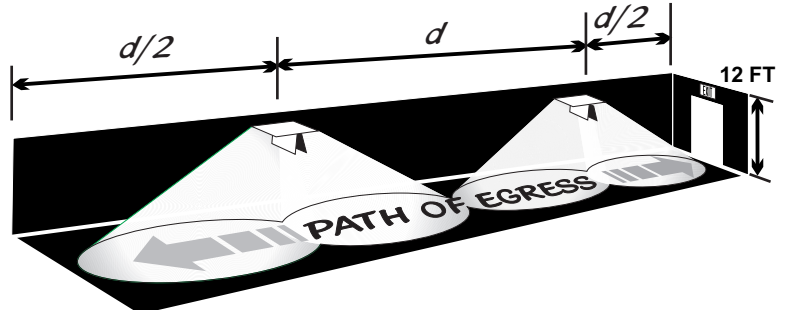


NORMAL MODE- CLOSED

EMERGENCY MODE- OPEN



CEILING MOUNTED COVERLITE SPACING ALONG A CORRIDOR



The spacing estimates below are based on NFPA Life Safety Code 101, which requires initial illumination averaging 1 foot candle (fc) along the path of egress, with a minimum at any point of 0.1 fc, and maximum uniformity ratio of 40:1.

DUAL LAMP POWER	40 W	70 W
SPACING "d"	75 FT	100 FT

ORDERING INFORMATION: EXAMPLE: CVR-75LC-2W-RT

CVR	-75	LC	-2	-RT
MODEL SERIES	LAMP WATTAGE	BATTERY TYPE	BATTERY RUN TIME	OPTIONS
CVR=COVERLITE EMERGENCY LIGHT	20 35 50 75	LC=SEALED LEAD CALCIUM NC=NICKEL CADMIUM NM=NICKEL METAL HYDRIDE	1.5=90 MIN 2 =2 HR 4 =4 HR	RT=Remote Test Panel DP=Damp Location SM=Surface Mount CFX=Custom Finish Custom "X" TO BE SPECIFIED

***FOR DETAILS REGARDING BATTERY TYPE AND BATTERY RUN TIME COMBINATIONS, SEE CURRENT SPECIFICATION SHEET SERIES CVR**

Remote Fixture is available. See Series CVRE Coverlite Remote and Central Battery System data sheet Series CBS.



Signtex Inc
LIGHTING

220 VFW Avenue, Grasonville, MD 21638
TEL: (410) 827-8300 Fax: (410) 827-8866
sales@signtexinc.com www.signtexinc.com



APPROVED FOR USE
IN NEW YORK CITY
Calendar #44119