

Moonlite Architectural Emergency Light Series MAE

Outdoor Egress MAE.05.10.04

The Brightest Idea is Emergency Lighting with LEDs

NEW!

GENERAL DESCRIPTION

- A dramatic new and compact architectural design, providing powerful emergency and normal lighting for over-door and other exterior locations. The lamp housing and canopy are fabricated from extruded aluminum, in enamel or anodized finishes, with rugged sealed diffuser lens and stainless hardware, for universal wall or ceiling mount.



CONSTRUCTION

- Extremely low profile, formed aluminum housing. Standard finish is white satin paint; custom colors are available, including brushed aluminum anodized finishes.
- Wet location listed IP66.
- Uniform elongated lighting pattern over required path of egress.
- Three versions are available:

RE= Central Battery System Series CBS or other qualified source 12V- 24 VDC.

BB= Battery backup from Remote Battery Supply Series RPS.

AC= 120/277 VAC supply.

ENERGY EFFICIENT OPERATION

- Dual function operation for night or security lighting as well as emergency lighting.
- Very low power consumption in night/ security mode. This unit offers tremendous energy savings when compared to any fluorescent or incandescent lighting systems during night operations.
- Over 50,000 hour lamp life in normal use.

- Lamps are connected in parallel. If one lamp fails, one or more lamps will continue in operation.
- Universal 120/277 VAC input for standard battery or AC unit, or 24 VDC input for remote configuration.
- Power supply delivers regulated current and voltage to LED lamps at optimum levels to maximize lamp life.
- Automatic battery diagnostics available for all battery models.

CODES

- Manufactured and tested to UL Standard 924 and NFPA Life Safety Code 101.

WARRANTY

- 5 year total customer satisfaction warranty. For details see product catalog technical data section.



FIXTURE SCHEDULE

MODEL	CATALOG NO
APPROVAL	JOB INFORMATION



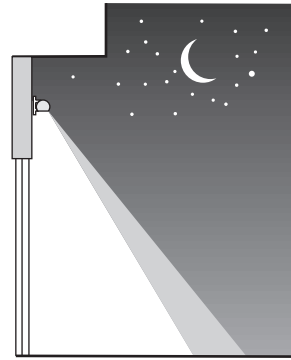
Moonlite Architectural Emergency Light Series MAE

Outdoor Egress

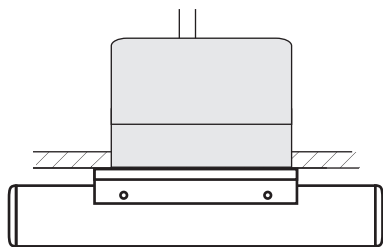
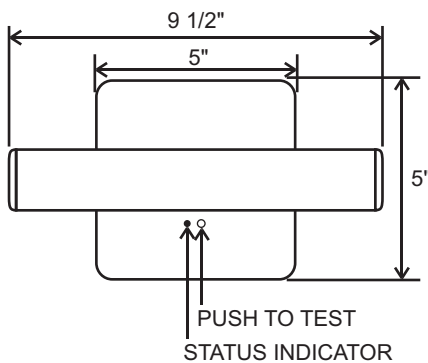
MAE.05.10.04

SUGGESTED SPECIFICATIONS:

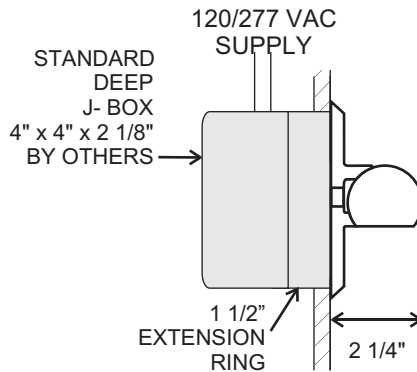
Install MOONLITE™ Series MAE architectural emergency lighting fixture manufactured by Sigtex Lighting, Inc. The MAE assembly shall be listed for installation in wet locations in compliance with UL 924 and IP66 standards, available as unit equipment or as a remote connected to a central battery power source. Upon loss of AC building power, lighting will be activated for a minimum of 90 minutes under battery power, in compliance with UL 924 and NFPA LSC Code 101. In remote configuration, the unit may be specified to operate continuously for security or night lighting, as required. The battery charger and power supply shall have universal input of 120/277 VAC, with brownout and LVD circuit protection. Auto battery diagnostics shall be available for all models and shall perform all test functions specified by UL 924 and NFPA 101.



MOUNTING DATA & DIMENSIONS:

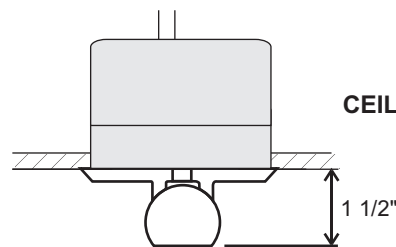


Emergency Power Rating (EPR): 10 WATTS
Security Power Rating (SPR): 5 WATTS



SUITABLE FOR WET LOCATIONS
AMBIENT TEMPERATURE LIMITS:
Standard "BB" models: -20° C to +40° C
Remote models: -40° C to +50° C

WALL MOUNT



CEILING MOUNT

ORDERING INFORMATION: EXAMPLE: MAEBB10WW-DG

MAE	BB	10-5	W	W	DG
MODEL SERIES	OPERATION	POWER	HOUSING COLOR	MOUNT	OPTIONS
MAE	RE= Remote with Central Battery System BB= Battery Backup AC= AC Supply 120/277V	10= 10 Watts Emergency 5 Watts Security	W= Satin White A= Aluminum 'X'=Custom	T= Top W= Wall	DG= Battery Diagnostics SW= Security Lighting with Control Switch*

*Models with battery backup and the SW option may operate in low power Security Lighting mode when connected to the active building AC supply and wired according to Installation Instructions. The security lighting circuit is independent of emergency lighting and may be switched manually, by an exterior photocell, or other automatic means.

Sigtex Inc
LIGHTING
220 VFW Avenue, Grasonville, MD 21638
TEL: (410) 827-8300 Fax: (410) 827-8866
sales@sigtexinc.com www.sigtexinc.com

DISTRIBUTOR:

Specifications and Dimensions subject to change without notice.